

## GODALMING TOWN COUNCIL

Tel: 01483 523575  
E-Mail: [office@godalming-tc.gov.uk](mailto:office@godalming-tc.gov.uk)  
Website: [www.godalming-tc.gov.uk](http://www.godalming-tc.gov.uk)

107-109 High Street  
Godalming  
Surrey  
GU7 1AQ

27 January 2023

I HEREBY SUMMON YOU to attend the **ENVIRONMENT & PLANNING COMMITTEE** Meeting to be held in the Council Chamber, Waverley Borough Council, The Burys, Godalming on THURSDAY, 2 FEBRUARY 2023 at 6.30pm.

Andy Jeffery  
Town Clerk

If you wish to speak at this meeting please contact Godalming Town Council on 01483 523575 or email [office@godalming-tc.gov.uk](mailto:office@godalming-tc.gov.uk)

**Where possible proceedings will be live streamed via the Town Council's Facebook page.** If you wish to watch the council meeting's proceedings, please go to Godalming Town Council's [Facebook](#) page.

Committee Members: Councillor Crooks – Chair  
Councillor Heagin – Vice Chair

Councillor Adam	Councillor Ashworth
Councillor Boyle	Councillor Cosser
Councillor Duce	Councillor Follows
Councillor Hullah	Councillor Kiehl
Councillor Martin	Councillor Neill
Councillor PMA Rivers	Councillor PS Rivers
Councillor Steel	Councillor Stubbs
Councillor Weightman	Councillor Williams

### AGENDA

1. MINUTES

To approve as a correct record the minutes of the meeting of the Committee held on the 12 January 2023, a copy of which has been circulated previously.

2. APOLOGIES FOR ABSENCE

3. DISCLOSABLE PECUNIARY INTERESTS AND OTHER REGISTERABLE INTERESTS

To receive from Members any declarations of interests in relation to any items included on the agenda for this meeting required to be disclosed by the Localism Act 2011 and the Godalming Members' Code of Conduct.

The Comments and observations from the following Waverley Borough Councillors are preliminary ones prior to consideration at Borough Council level and are based on the evidence and representations to the Town Council.

Councillor Cosser  
Councillor Follows  
Councillor Heagin  
Councillor Martin  
Councillor PMA Rivers

Councillor PS Rivers  
Councillor Williams

In accordance with Min No 401-19, Cllr Cosser has declared that, in order to avoid a personal conflict of interest, he will not take part in debates or votes on planning matters at meetings of this Committee.

4. PETITIONS/STATEMENTS/QUESTIONS FROM MEMBERS OF THE PUBLIC

The Chair to invite members of the public to make representations, ask or answer questions and give evidence in respect of the business on the agenda or other matters not on the agenda. This forum to be conducted in accordance with Standing Order 5:

- the period of time designated for public participation at a meeting for a maximum of three minutes per person or 15 minutes overall, unless otherwise directed by the Chair of the meeting;
- a question shall not require a response at the meeting nor start a debate on the question. The Chair of the meeting may direct that a written or oral response be given. If a matter raised is one for principal councils or other authorities, the person making representations will be informed of the appropriate contact details.

5. QUESTIONS BY MEMBERS

To consider any questions from Councillors in accordance with Standing Order 6.

6. BROADWATER PARK GOLF COURSE REGENERATION PROJECT – UPDATE

Members to receive an update from Mr Chris Wheeler, Executive Head of Waverley Borough Council's (WBC) Environmental Services on the way forward for the former golf course site at Broadwater Park.

Members will recall that on 24 June 2021 they received a presentation from a local school pupil with suggestions for the repurposing of this area and that Members subsequently agreed for a letter to be sent to the CEO of WBC supporting the ideas presented (Min No 90-21 refers). The original presentation and letter to WBC are attached for the information of Members, copies of which have also been sent to the Project Officer - Regeneration & Planning Policy at WBC.

7. FARNCOMBE VILLAGE & BINSCOMBE COMMUNITY VISION FOR A GREENER CLEANER SUSTAINABLE FUTURE – ACTION PLAN REVIEW – ITEM TO NOTE

Members to note the updated Action Plan progress report (attached for the information of Members) relating to the Farncombe Village & Binscombe Community Vision for a Cleaner Sustainable Future document.

8. PLANNING APPLICATIONS - CONSULTATION

To consider a schedule of planning application attached at Appendix A.

9. APPLICATIONS FOR CARBON REDUCTION & BIODIVERSITY FUNDING

Information:		£
<b>22/2023 Carbon Reduction &amp; Biodiversity Fund Allocation</b>		10,000.00
Allocations this year to date		0.00

Carbon Reduction & Biodiversity Fund applications this meeting	8,000.00
Balance unallocated if applications agreed	2,000.00

---

Members to consider the following applications for grant aid – the summary of the application is given below – the detailed applications are attached for the information of Members.

Water Rangers

£8,000 is applied for to facilitate the connection of datasets which will assist community groups to better understand the implications of pollution on water quality in the River Wey catchment area and which will allow residents to support monitoring of local waterways.

Previous Grants: None

10. COMMUNICATIONS ARISING FROM THIS MEETING

Members to identify which matters (if any), discussed at this meeting, are to be publicised.

11. DATE OF NEXT MEETING

The next meeting of the Environment & Planning Committee is scheduled to take place in the Council Chamber on Thursday, 23 February 2023 at 6.30pm.

12. ANNOUNCEMENTS

Brought forward by permission of the Chair. Requests to be submitted prior to commencement of the meeting.

# Godalming Bike Park

Zac Shovelton



# Location

Broadwater Golf Club has been disused since January 2019

The 80,000 square meter site is an old rubbish dump. **'It is a waste ground and a waste of ground'**

The waste ground is ideally located next to Broadwater recreational ground.





My inspiration!

## **Gosport BMX park**

A free facility

All ages and abilities having fun

Also located next to a rubbish dump.

A safe place to enjoy the outdoors with friends  
and family.

This also began as a 'dream'

# There is nothing for older children and teenagers to do in Godalming!!

- Teens are getting into trouble because of this – anti social behaviour - There is evidence that a bike track would reduce this - <https://www.itv.com/news/wales/story/2013-08-06/rhondda-bmx-track-among-europe-best/>
- Play areas are great for 0 - 9 year olds (but also tired, particularly at Broadwater even after the refurbishment )
- There are no youth clubs
- We need a safe place to be able to hang out, enjoy the outdoors and keep fit especially after being locked up for over a year!
- The skate park in the Crown Court car park is tiny, However, it is oversubscribed.



# My petition – over 1000 supporters within 14 days!



**Andrew Brittain**

5 days ago

I support what Zac is suggesting. As a volunteer youth worker in the Air Cadets, I do relate to what he is saying. The idea is sound, the location is perfect and, if this goes ahead, please make sure Zac is involved in the design. Listen to the young people as they are our future.

♡ 2

[Report](#)



**Rhi Furlonger**

5 days ago

This needs to happen! Make use of the space for something the community needs!

♡ 0



**Robin Hill**

3 days ago

I am a skateboarder and parent living in Farncombe. The skatepark at The Burys is massively over subscribed and insufficient.... Godalming needs a better facility to give the youth of the area the opportunity to learn and excel at skateboarding, bmxing and similar disciplines. The benefits to the community are huge and we should not need to drive to Guildford, Farnham or Petersfield for decent facilities.





**Tracy Scott**

3 days ago

This is exactly what our community needs.



**Lynne McFarlane**

2 days ago

I'm all for enabling young people to access free, fun and healthy activities. During lockdown I saw several posts about kids' diy tracks in the woods being wrecked. This is a good idea for the old golf course and I hope the Council will take it seriously.



**Tyler Hurst**

5 days ago

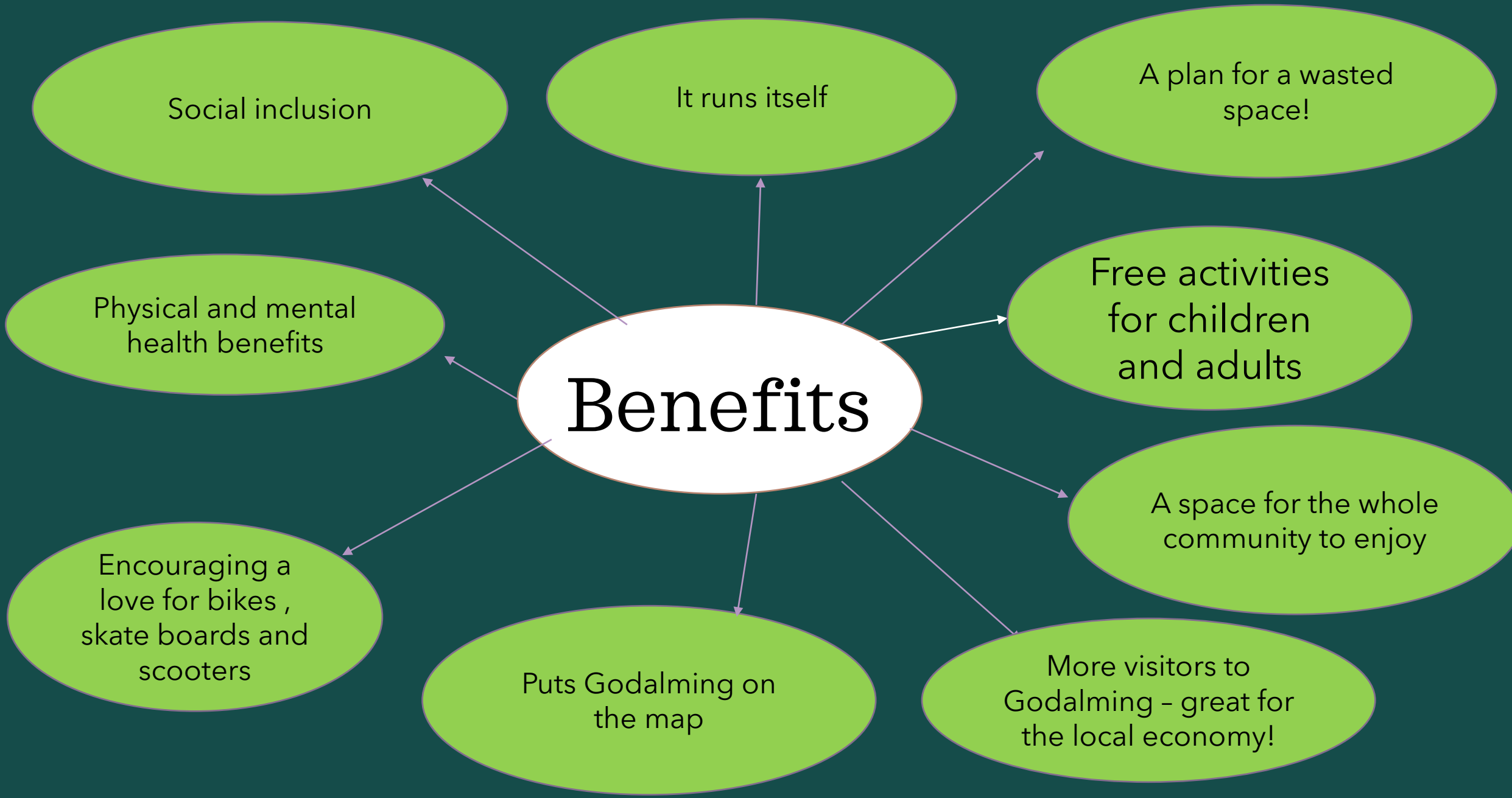
I feel like this is a good thing for the local community because I feel like we don't have enough local things like this



**Emilie Adams**

4 days ago

I wholeheartedly support initiatives driven by young teenagers for young teenagers. What a great idea. I hope officials recognise the need for exciting facilities for kids of that age group, so that this project can get off the ground.



# Benefits

Social inclusion

It runs itself

A plan for a wasted space!

Physical and mental health benefits

Free activities for children and adults

Encouraging a love for bikes, skate boards and scooters

A space for the whole community to enjoy

Puts Godalming on the map

More visitors to Godalming - great for the local economy!

# Opportunities for Local Businesses

A 'Bike shop'  
repairs and  
sales

Food and  
drink

Bike and skate  
boarding  
lessons

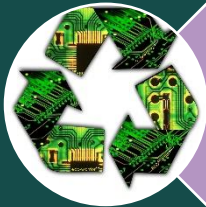
Other outdoor  
activities



# Helping the climate



Green features to be incorporated into the design -  
Trees, grassland, plants somewhere for the wildlife to  
thrive too.



The use of sustainable and recycled materials



The site can be accessed from many towns and  
villages by bike and train.



Promoting a love of bikes from a young age will  
encourage a life long passion - for exercise, transport  
and local utility trips.



# Areas

---

BMX/Bike track

---

Skate/Scooter ramps

---

A bike track for younger children

---

A trail for walking and running

---

Pop up retail/Food and Drink area

# Funding

---

Council

---

EM3

---

[Surrey Community Fund](#)

---

Lottery

---

Sponsorship/Fundraising/Crowdfunding

# **'Bike Parks Build Healthy Communities'**

Thank you for listening

Any questions ?

Zac



Clerk: Andy Jeffery MSc MCGI  
Tel: 01483 523575  
E-Mail: office@godalming-tc.gov.uk



107-109 High Street  
Godalming  
Surrey  
GU7 1AQ

25 June 2021

Mr Tom Horwood  
Chief Executive  
Waverley Borough Council  
The Burys  
Godalming  
GU7 1HR

Dear Mr Horwood

**Re: Farncombe Skateboard & Bike Park**

I am writing on behalf of Godalming Town Council (GTC) following a presentation from a young citizen of Godalming, Zac Shovelton, to the Council's Environment & Planning Committee for the provision of a Skateboard and BMX Park in Farncombe on the site of the former Broadwater Golf Course (copy of presentation attached to email).

Zac presented a vision to GTC, which was both informative, visionary and aligned with the aspiration of the Godalming & Farncombe Neighbourhood Plan (GoFarNP) and it is believed meets the aims of Waverley Borough Council (WBC) in as much as:

- the Waverley Local Plan Pt 1 8.2 states that sustainable development aims to support strong, vibrant and healthy communities with accessible local services that reflect the community's needs and support its well-being. To achieve this, the right community facilities and other local services must be planned to enhance the sustainability of communities and meet local needs;
- the Waverley Local Plan also states that "The provision of improved recreational facilities supports the drive for healthier lifestyles and benefits the quality of life for many people". The Waverley local plan identifies that the delivery of improved recreational facilities is through infrastructure projects associated with the adoption of the Community Infrastructure Levy and working with partners to identify issues and co-ordinate the delivery of infrastructure;
- WBC corporate strategy aims to provide high quality public services, accessible for all, including sports, leisure, arts, culture and open spaces.
- Additionally, Zac Shovelton's vision supports WBC's and GTC's strategy to improve facilities for young people and to promote 'reduce & re-use' through the re-purposing of existing facilities which meets the aim of sustainable development.

Whilst GTC has an understanding of the issues relating to the site, as you will see from Zac's presentation, if those issues were to be resolved the repurposing of the site to a combined Skateboard, BMX, scooter and outdoor activity hub, which includes commercial income opportunities, could be seen as an opportunity to provide public amenity for the benefit of Godalming and surrounding communities.

In considering the potential for such a development, GTC wishes to express its support for such an opportunity alongside its willingness to work with WBC to explore opportunities to deliver on the aspirations of the GoFarNP.

Web: [www.godalming-tc.gov.uk](http://www.godalming-tc.gov.uk)

GTC requests that the Executive of WBC and senior management team gives serious consideration to this proposition, which could make a vision into a reality.

GTC wishes to support WBC in any way it can to develop this opportunity and looks forward to hearing from you on any potential project that may arise from your considerations.

Yours sincerely

*Andy Jeffery*

Andy Jeffery  
Town Clerk

Enc: Presentation by Zac Shovelton attached by email

cc: Cllr Paul Follows – Leader WBC  
Zac Shovelton c/o Amanda Shovelton

By email to: [Tom.horwood@waverley.gov.uk](mailto:Tom.horwood@waverley.gov.uk)  
[Paul.follows@waverley.gov.uk](mailto:Paul.follows@waverley.gov.uk)

**Farncombe Village & Binscombe Community Vision for a Greener Cleaner Sustainable Future – Action Plan Review – January 2022**

<b>Action 1</b>	<b>Planning</b>
<p>Continue to provide an opportunity for the public to express their views on planning matters and to provide advocacy for the protection of the character of the Farncombe and Binscombe locality. Utilise Godalming Town Council's (GTC's) social media to promote knowledge of how residents are able to express concerns to Members at meeting of the council or its committees.</p> <p>Work to ensure, by advocacy and planning comments and objections, that the character of the Farncombe Village and Binscombe community areas are not adversely impacted by developments.</p> <p>Farncombe retail; PDR etc.</p> <p>Support affordable and social housing for the community.</p> <p>As a statutory consultee, GTC reviews, and where it considers appropriate, provides observations and comments on planning applications affecting the Farncombe and Binscombe areas.</p> <p>Local ward Councillors and the wider GTC elected membership engaged with the developers at Binscombe to seek to ensure that the site is optimised for social and affordable housing, and that the development meets higher eco-standards</p> <p>On publication of the Waverley Affordable Housing Strategy, GTC engagement with Waverley housing team to better understand the strategy and how GTC could support it as it is developed.</p>	
<b>Action 2</b>	<b>Guildford to Godalming Greenway – Linking Residential Areas</b>
<p>Support the Greenway and advocate for it to be a catalyst to provide safe routes for local residents to walk and cycle from Farncombe and Binscombe into Godalming town centre.</p> <p>GTC continues to be active in attending meetings with and providing observations and comments to both Waverley Borough Council (WBC) and SCC (SCC) Officers in relation to the development of cycling and walking routes in and around the Farncombe and Binscombe areas to link with the proposed Greenway. Additionally, GTC continues to provide observations and comments to inform the development of the Waverley Local Walking and Cycling Infrastructure plan as it affects Farncombe, Binscombe and the wider Godalming area.</p>	
<b>Action 3</b>	<b>Community Events</b>
<p>Continue to support local community events.</p> <p>Support local market events in the Farncombe Station area via the Rail Partnership. Consult on the desirability of holding market events in Farncombe Street between the Junction with St John's Road and the western railway crossing.</p> <p>GTC engaged with the rail operating companies to determine the feasibility for opportunities to utilise land around Farncombe Station for community events. Unfortunately, due to a range of issues, this has not proved possible at this time. Additionally, GTC has consulted on the possibility of holding market events in Farncombe; whilst options relating to street trading consent and road closures have been identified, potential impacts on existing permanent businesses are yet to be resolved.</p>	

<b>Action 4</b>	<b>Floral Godalming (Farncombe &amp; Binscombe)</b>
<p>Work with the local community to expand Floral Godalming into the Farncombe and Binscombe area. Displays need not be limited to planters but may involve the planting of verges and other poorly maintained/minimal diversity grassed areas. Floral Godalming (Farncombe &amp; Binscombe) should also consider locations for tree planting within the area. Action 5 Benches &amp; Bus Stops &amp; Notice Boards</p> <p>GTC ground staff have begun work on the land opposite The Mill Medical Practice to enhance that area. Expansion of Floral Godalming into Farncombe and Binscombe is hoped to be progressed during 2024/25 as funding is identified.</p>	
<b>Action 5</b>	<b>Benches, Bus Stops &amp; Notice Boards</b>
<p>Conduct an audit of potential locations for new benches and agree an installation plan, based on available funds. Refurbish the St John's and Meadow bus stop shelters. Identify additional locations suitable for bus shelter provision.</p> <p>Clearance of overgrowth around the St John's bus shelter was carried out in 2022 with works planned for spring 2023 for refurbishment of both shelters. GTC has requested that real time bus timetable information display is installed at the Meadow (Kings Road) bus stop.</p>	
<b>Action 6</b>	<b>Farncombe Signal Box</b>
<p>Work with Network Rail and the Community Rail Partnership to explore options for use of the land current occupied by the signal box for when the signal box becomes defunct.</p> <p>Options for alternative use for the Farncombe signal box post decommissioning were explored by the Farncombe Initiative community group. No feasible alternative use was identified. GTC has been informed by Network Rail that following the upgrading of the signalling system and level crossing control, the signal box will be removed. GTC has requested that a shelter be provided on the land currently occupied by the signal box for pedestrians waiting when the barriers are lowered.</p>	
<b>Action 7</b>	<b>Telephone Kiosks</b>
<p>GTC has adopted the phone box in Spring Grove and plans to undertake the refurbishment, painting, replacement glass and electrical safety as required by the adoption agreement with BT. Additionally, the Council will apply for any planning permission required to change its use from a telephone Kiosk to whatever purpose is finally agreed. Local Councillors will consider options for the future use to which the kiosks should be put</p> <p>Working with local councillors and the Broadwater Youth Centre, the Spring Grove telephone kiosk will be refurbished to accommodate a public access defibrillator.</p>	
<b>Action 8</b>	<b>Public Art</b>
<p>GTC to work with local art groups, WBC and other landowners to determine options for public art within the Farncombe and Binscombe areas, including, for instance, the gable walls of the GTC-operated public toilets in Station Road.</p> <p>As far as possible GTC will also support the preservation of historic signage and 'Ghost Advertisements/Brickads' within the village centre.</p> <p>The Farncombe Initiative community group is exploring opportunities for public art in the Farncombe and Binscombe areas, GTC will consider options as and when they are presented.</p>	

<b>Action 9</b>	<b>Regeneration and Supporting the Local Economy</b>
<p>GTC's role is, as far as possible, to ensure that the Farncombe and Binscombe retail areas remain visually attractive and vibrant locations for businesses to operate.</p> <p>If required, GTC will work with and support the Local Planning Authority for the making of an Article 4 Direction for the Farncombe retail centre to remove the permitted development rights that allow the change of use from commercial to residential.</p> <p>Through its Environment &amp; Planning Committee. GTC will seek to influence planning decisions that contribute to creating and maintaining a balanced retail offering and hospitality offering.</p> <p>Although permitted under existing Permitted Development Rights, GTC raised objections to the change of use of 8 &amp; 8A Farncombe Street from retail to residential. The Town Council also considered options for seeking an Article 4 Direction Order for the Farncombe Retail area. However, due to 2021 changes to the Article 4 criteria the ability to use this legislation is no longer available.</p>	
<b>Action 10</b>	<b>Baden Hall</b>
<p>As one of the few buildings within the area available for community hire, GTC will work with the Baden Hall management group to support works to improve the energy efficiency and equality provision to allow the building to meet community needs.</p> <p>Discussion on potential options have been held and GTC will consider any proposals brought forward.</p>	
<b>Action 11</b>	<b>EV Charging Points</b>
<p>GTC will work with both WBC and SCC to identify potential locations for EV charging points.</p> <p>GTC, working with SCC, has identified the following locations in Binscombe and Farncombe for the installation of on-street EV charging points: Station Road, Wolseley Road, Bourne Road and Summers Road. GTC will continue to work with SCC and WBC to identify additional potential locations.</p>	
<b>Action 12</b>	<b>Twenty is Plenty</b>
<p>GTC will lobby the Highways Authority to consult with residents for the creation of a 20mph zone within the main residential areas of Binscombe and Farncombe, to not only create a safer environment, but also a cleaner and healthier place to live.</p> <p>The Town Council believes that the implementation of a 20mph area-wide speed limit in Godalming, combined with a public information campaign, would have immediate beneficial impacts upon road safety, air quality, active transport and community well-being in this location, and would support the Council's climate emergency objectives. GTC has lobbied that SCC prioritise the establishment of a 20mph area-wide speed limit in Godalming, and specifically in the residential areas of Farncombe and Binscombe.</p>	
<b>Action 13</b>	<b>Farncombe Youth Football Club – Meades Park – Green Lane</b>
<p>GTC to work with the FYFC management team to support bids for ground improvements that will benefit the future members of the club without adversely impacting upon the surrounding neighbourhood.</p> <p>Councillors have met with representatives of the FYFC to discuss potential improvements to the Meades Park ground and awaits further engagement of options.</p>	
<b>Action 14</b>	<b>Allotments</b>
<p>GTC to explore future availability of additional allotment sites.</p> <p>No action to date.</p>	

<b>Action 15</b>	<b>Youth Provision</b>
<p>GTC is committed to the provision of the Godalming and Farncombe Youth Centre and Drop-In-Centre for young people of secondary school age located at Broadwater Park. GTC will, where possible, seek to expand its youth provision to match the local need.</p> <p>GTC opened a dedicated youth centre at Broadwater Park in May 2022, which not only provides universal term time youth work support for the local community, but also provides school holiday support for young people.</p>	
<b>Action 16</b>	<b>Alleyways and Footpaths</b>
<p>Continue to advocate for the upkeep of alleyways and footpaths (which are the responsibility of SCC, WBC and local residents).</p> <p>GTC's direct workforce has undertaken the clearance of a number of hedges and verges on behalf of SCC.</p>	
<b>Action 17</b>	<b>Godalming &amp; Villages Community Store</b>
<p>Support the relocation of the Godalming &amp; Villages Community Store to new premises located at Broadwater Park, Farncombe.</p> <p>GTC, supported by WBC, were able to identify a new permanent home for the Godalming &amp; Villages Community Store. The Town Council's workforce undertook the refurbishment of the new premises to enable the community store to take up residence in April 2022.</p>	
<b>Action 18</b>	<b>Recreation Grounds</b>
<p>Advocate for WBC to consult with residents to review the Public Spaces Protection Order at the end of 2022 to establish support for the Canon Bowring recreation ground to revert to its previous designation as a dog exclusion zone.</p> <p>In January 2023 GTC considered the issue of control of dogs at the Canon Bowring recreation ground and made a submission to WBC that dogs should remain excluded from the children's play area and that the PSPO be amended to permit the exercising of dogs on a lead within the other areas of the ground. Additionally, GTC requested that new creative signage be installed.</p> <p>Similarly, GTC will support consultation for the Combe Road recreation ground to also become a dog exclusion zone in the same review.</p> <p>WBC are to consult with residents on the current PSPO in February 2023.</p> <p>Advocate for improved provision for those with disabilities, including improved access to existing facilities.</p> <p>Local Councillors have met with WBC to seek access improvements to the Canon Bowring recreation ground. GTC members consider this a priority due to significant flooding at the entrance to the recreation ground that challenges its year-round use.</p> <p>Support the repurposing of some parts of the former Broadwater Golf Club site to include a combined Skateboard, BMX, scooter and outdoor activity hub with associated infrastructure, incorporating nature trails and environmental enhancements.</p> <p>GTC wrote to WBC to voice its support for a wider range of community uses on this site.</p> <p>Notwithstanding the above GTC remains open to other proposals brought forward for this site on its merits and overall benefit for the community.</p>	
<b>Action 19</b>	<b>No Action Identified (miss numbering on original document)</b>

<b>Action 20</b>	<b>Public Notice Boards</b>
Investigate provision of a public noticeboard on Binscombe Lane by the Binscombe Crescent shopping arcade. GTC to identify improved noticeboard designs as part of future replacement program.	
No action to date.	
<b>Action 21</b>	<b>Rail/Bus Integration</b>
Advocate for the redesign of the forecourt at Farncombe railway station so that buses can stop outside the entrance, as envisaged by the Neighbourhood Plan and for the 46 bus to stop at Farncombe train station.	
No action to date.	
<b>Action 22</b>	<b>Highways Infrastructure</b>
Remain actively engaged with SCC Highways for the benefit of the local area and to engage the SCClor for Godalming North in identifying areas in need of improvement or intervention by SCC Highways.	
Improvements to the road layout at Station Road for a safer crossing point outside Farncombe Station on Station Road have been undertaken. Additionally, GTC in support of the local SCC councillor, identified road and pavement improvements in and around Farncombe and Binscombe.	
<b>Action 23</b>	<b>Accessibility, Walkability and Bikeability</b>
Advocate for effective use of techniques to change how road space is used and prioritised in terms of who uses it in line with the recently revised Highways Code – priority for pedestrians, cyclists and horses. Support a campaign to publicise the revised priorities.	
GTC has actively engaged with the Local Cycling, Walking Infrastructure Plan (LCWIP) to identify options to improve accessibility in and around Farncombe and Binscombe.	
<b>Action 24</b>	<b>Transport and Access Master Plan</b>
Produce a transport and access master plan that looks at improvements in infrastructure and accessibility, road usage and routes. Developed in consultation with local residents, schools, businesses, and other stakeholders, the aim would be to produce a coherent plan of improvement which will make routes from/to and through Farncombe and Binscombe safer and greener.	
No action to date.	
<b>Action 25</b>	<b>No Action Identified (miss numbering on original document)</b>
<b>Action 26</b>	<b>Rugby Club</b>
Identify whether the Council is able to support community events held at Broadwater Pavilion and the Rugby Club grounds.	
GTC has engaged with the Rugby Club for the delivery of the 2023 Bonfire and Fireworks event.	

<b>Action 27</b>	<b>Possible Extension of Godalming Leisure Centre</b>
<p>To review and comment upon the WBC business case for any extension of the Godalming Leisure Centre, takes the following into account in determining observations and GTC's support or otherwise:</p> <ul style="list-style-type: none"> <li>- that the specific recreational, leisure and fitness facility needs of the community have been identified;</li> <li>- the identified needs of the community have been measured against the existing supply of recreational, leisure and fitness facilities within the area, including community facilities such as Broadwater Park School Community Gym, private membership fitness centres and multi-sports facilities in neighbouring areas such as the Surrey Sports Park;</li> <li>- the desirability of focusing any additional facilities identified by the community needs analysis at the existing Godalming Leisure Centre location, as opposed to expanding opportunities at other locations, such as Godalming 6th Form College, Rodborough School in Milford, or new facilities located in areas of significant residential expansion such as Milford, or Dunsfold Park, thus reducing the need for extended vehicle movements across the local road networks;</li> <li>- the desirability of provision of additional car parking spaces in light of WBC's declaration of a climate emergency; and</li> <li>- the over-riding of Green Belt protection and loss of school playing fields to provide additional car parking spaces at Godalming Leisure Centre.</li> </ul> <p>GTC would also wish to see a comprehensive traffic analysis that models the impact of any extension of the Leisure Centre, especially in relation to any cumulative effect associated with the expansion of Broadwater School.</p> <p><b>A letter from WBC was presented to GTC on 15 December 2022 stating Any current proposals to extend the car park at Godalming Leisure Centre will be cancelled immediately. GTC welcomed this statement.</b></p>	
<b>Action 28</b>	<b>Protection of Trees</b>
<p>In order to provide added protection to trees not subject to a TPO, GTC will request that WBC adds all trees lying within a conservation area, protected woodland or other area where trees are subject to protection by a local policy from felling, topping, lopping, uprooting, wilful damage or wilful destruction with a trunk diameter of 75mm or more when measured at 1.5m above ground level, added to the WBC digital mapping system.</p> <p>The Godalming &amp; Farncombe Neighbourhood Plan review process sought to establish an area protection order for the tree stock within the Farncombe and Binscombe areas.</p> <p><b>Investigations have indicated legislation would not support an area protection order in this location. Discussions have taken place with WBC regarding tree mapping.</b></p>	
<b>Action 29</b>	<b>Encourage Tree Planting</b>
<p>In collaboration with the Waverley Tree Planting Strategy and consultation with local residents, businesses and schools, identify potential sites within the Farncombe and Binscombe area with a focus on residential areas and verges for tree planting.</p> <p><b>GTC supports the WBC Tree Planting Strategy, it is unfortunate that planting in Binscombe was adversely impacted by the extreme heatwave of 2022.</b></p>	
<b>Action 30</b>	<b>Social Housing</b>
<p>In consultation with residents, GTC will support improvement to the existing social housing stock by WBC and for future provision of properties to be made available as social rented homes.</p> <p><b>Local ward Councillors and the wider GTC elected membership engaged with the developers at Binscombe to seek to ensure that the site is optimised for social and affordable housing, and that the development meets higher eco-standards</b></p> <p><b>On publication of the Waverley Affordable Housing Strategy, GTC engagement with Waverley housing team to better understand the strategy and how GTC could support it as it is developed</b></p>	



**GODALMING TOWN COUNCIL**

**ENVIRONMENT & PLANNING - SCHEDULE OF PLANNING APPLICATIONS – 3 JANUARY TO 24 JANUARY 2023**

<u>Ref</u>	<u>Ward</u>	<u>Proposal</u>	<u>Site Address</u>	<u>GTC Observations</u>
<b>WBC Weekly List 23/02</b>				
WA/2023/00010	Godalming Central and Ockford	Listed Building Consent for change of use from office (use Class E) to residential (use Class C3) to provide one dwelling with internal alterations.	22 Church Street Godalming GU7 1EW	
WA/2023/00009	Godalming Central and Ockford	Change of use from office (use Class E) to residential (use Class C3) to provide one dwelling to include existing garage accessed via Cow Lane.	22 Church Street Godalming GU7 1EW	
WA/2023/00045	Godalming Central and Ockford	Certificate of Lawfulness under Section 192 for installation of 8 solar panels.	32 Hawthorn Road Godalming GU7 2NE	
WA/2023/00043	Godalming Charterhouse	Erection of extensions and alterations with associated landscaping.	11 The Brambles Godalming GU7 2QY	
WA/2023/00041	Godalming Charterhouse	Erection of extensions and alterations to existing theatre building with associated landscaping.	Ben Travers Theatre Charterhouse Hurtmore Road Godalming GU7 2DU	
WA/2023/00011	Godalming Holloway	Erection of first floor extension and porch; alterations to extend existing access.	21 Mary Vale Godalming GU7 1SW	
<b>WBC Weekly List 23/03</b>				
WA/2023/00058	Godalming Central and Ockford	Erection of two storey and single storey extensions and alterations with associated works.	54 Aarons Hill Godalming GU7 2LH	
WA/2023/00057	Godalming Holloway	Erection of first floor extension and alterations to attached garage to provide habitable accommodation.	18 Mary Vale Godalming GU7 1SW	
WA/2023/00059	Godalming Holloway	Erection of extensions, alterations to elevations and fenestrations with associated works following demolition of garage (revision of WA/2022/02415).	Little Oak Oakdene Road Godalming GU7 1QF	

<u>Ref</u>	<u>Ward</u>	<u>Proposal</u>	<u>Site Address</u>	<u>GTC Observations</u>
<b>WBC Weekly List 23/04</b>				
WA/2023/00147	Godalming Central and Ockford	Alterations to external shopfront	53-55 High Street Godalming GU7 1AW	
WA/2023/00146	Godalming Central and Ockford	Listed building consent for internal alterations together with alterations to shopfront and installation of 2 illuminated replacement signs.	53-55 High Street Godalming GU7 1AW	
WA/2023/00145	Godalming Central and Ockford	Application for advertisement consent to display one illuminated fascia sign and one illuminated projecting sign.	53-55 High Street Godalming GU7 1AW	
WA/2023/00138	Godalming Central and Ockford	Certificate of lawfulness under section 192 for installation of sliding doors; removal of chimney stack.	73 Aarons Hill Godalming GU7 2LH	
WA/2023/00131	Godalming Central and Ockford	Erection of extensions, alterations to elevations and installation of photo voltaic panels to roof.	17 Great George Street Godalming GU7 1EE	
WA/2023/00125	Godalming Central and Ockford	Erection of first floor extension and alterations to elevations.	12 Cliffe Road Godalming GU7 2JX	
WA/2023/00120	Godalming Central and Ockford	Alterations to existing basement to provide additional habitable accommodation with provision of lightwell and replacement fenestration to ground floor.	1 Firgrove House Ockford Road Godalming GU7 1QX	
WA/2023/00118	Godalming Central and Ockford	Listed Building Consent for external alterations.	19 Ockford Road Godalming GU7 1QU	
WA/2023/00117	Godalming Central and Ockford	Erection of extension and alterations.	19 Ockford Road Godalming GU7 1QU	
WA/2023/00088	Godalming Charterhouse	Construction of a substation following removal of existing two substations and associated works,	Charterhouse School Charterhouse Hurtmore Road Godalming GU7 2DF	

<b><u>Ref</u></b>	<b><u>Ward</u></b>	<b><u>Proposal</u></b>	<b><u>Site Address</u></b>	<b><u>GTC Observations</u></b>
WA/2023/00074	Godalming Charterhouse	Application under Section 73 to vary condition 2 of WA/2022/02656 (restrictions on external materials) to allow use of light-coloured render and handmade clay tiles.	Tarshyne 2 Newstead Close Godalming GU7 2AJ	
TM/2023/00073	Godalming Charterhouse	APPLICATION FOR WORKS TO TREES SUBJECT OF TREE PRESERVATION ORDER 07/07	4 McAlmont Ridge Godalming GU7 2AR	
WA/2023/00119	Godalming Holloway	Erection of first floor extension over existing attached garage.	Radcliffe House Tuesley Lane Godalming GU7 1SB	
WA/2023/00106	Godalming Holloway	Erection of extension and alterations with associated works.	Red Cottage 92 Brighton Road Godalming GU7 1PW	

## **CARBON REDUCTION & BIODIVERSITY FUND** **GUIDANCE NOTES AND APPLICATION FORM**

### **GUIDANCE NOTES FOR APPLICANTS**

#### Aim of the fund

Godalming Town Council established a Carbon Reduction & Biodiversity Fund in July 2019 in order to provide funding towards projects where a primary aim is to reduce CO<sub>2</sub> emissions from households, organisations or individuals in Godalming and promote biodiversity. The fund is designed to support activities such as (but not limited to); practical work, feasibility studies/research projects, awareness raising or training.

The Council anticipates that projects which fit into one or more of the following themes to be eligible for this grant, though innovative schemes which further the aims of this grant, but do not fit within these categories are also welcome to apply.

- Energy conservation and renewable energy,
- Reduction in energy use in homes, businesses and elsewhere,
- Low carbon transport,
- Farming and food, particularly the production, sale and consumption of preferably organic locally sourced food
- Community involvement in reducing CO<sub>2</sub> emissions
- The creation, restoration or enhancement of wildlife habitats

The **primary criterion** for carbon reduction applications to the fund is **CO<sub>2</sub> savings per pound spent**. The carbon reduction grants are intended to help facilitate projects whose primary aim is to reduce CO<sub>2</sub> emissions within Godalming parish. Although not required, applications who are able to provide a quantitative estimate of CO<sub>2</sub> savings that result from their proposed activity will be favoured.

The **primary criterion** for biodiversity applications to the fund is **biodiversity net gain**.

The fund can endorse projects which enable applicants to leverage income from other sources or be the full and only sponsor of the project.

#### Funding priorities

In addition to the primary aim of the fund, applications will be at an advantage if the project fulfils one or more of the following criteria:

- Is innovative in its approach to the reduction of CO<sub>2</sub>
- Develops a stronger and more sustainable community
- Encourages community engagement around sustainability and reduction of CO<sub>2</sub>

- Improve the overall biodiversity of habitats including woodlands, ponds, rivers, meadows, green spaces and the wider countryside in the Godalming parish.
- Demonstrate additionality, specifically a net gain in biodiversity will be achieved using the grant funding that would not otherwise have been achieved.
- Secure a site as a biodiversity asset in perpetuity

#### How to use these guidance notes

These guidance notes accompany the grant application form and are provided to help you make the best possible case for an award from the fund. To make best use of the guidance notes, follow the steps below:

**FIRST** – check that your project meets the fund conditions. If it does not, you will not receive funding.

**SECOND** – if your project meets the conditions, it is important that you make this clear on the application form. Make sure that your answer to the question indicated after each condition clearly demonstrates that you meet that condition.

**THIRD** – the more of our **funding priorities** that your project fulfils, the better chance you have of receiving a grant. When filling in the form, be clear as to which of the funding priorities your project relates and how it does so. The questions where you can do this most easily are indicated after each funding priority below; you may find other opportunities. You do not have to address all the priorities, you could still be funded even if your project does not address them as long as it addresses the main **aim** of the fund (as above).

#### **FUND CONDITIONS**

Funding will be awarded *only* if:

- There has been no successful application to Godalming Town Council for funding for the same project in the previous twelve months (**Q7**)
- The project is designed primarily to focus on the reduction of **CO2** in Godalming, ultimately for the benefit of the global community but also for the residents of the parish (**Q10, Q17**)
- The project does not financially benefit any private individual or private company (for example, the fund could not be used to fund solar panels on roof of an applicants private residence).

#### Additional extras

It would also be beneficial to provide the following information to assist the Council with its decision making.

- List potential beneficial effects that extend beyond the period of the project itself
- Where the project is likely to be long-term or open-ended, the application includes a projection of how it will be funded after any grant awarded by the Town Council is spent.

#### **Linked Documents:**

Guidance Notes for Applicants – CO<sup>2</sup> Reduction & Biodiversity

## CARBON REDUCTION & BIODIVERSITY FUND: GRANT APPLICATION FORM

You must complete every section of the form, attach additional sheets if necessary.

<b>1) Organisation Applying</b>  <i>Name</i> <i>Address</i>	Water Rangers <hr/> Official address: 123 Slater Street, 6th Floor, Ottawa, Ontario, K1P 5H2, Canada England address for correspondence: <hr/> 20 Silent Garden Road, Liphook, Hampshire, GU30 7GU		
<b>2) Contact Person for this Application</b>  <i>Name</i> <i>Position</i> <i>Organisation</i> <i>Telephone No.</i> <i>Email Address</i>	Kat Kavanagh <hr/> Executive Director <hr/> Water Rangers <hr/> 07865 673 411 <hr/> kat@waterrangers.ca		
<b>3) Payee Details</b>  <i>Give the name of the account to which any grant cheque should be made payable (payments will not be made to individuals).</i>	Acc Name <u>Water Rangers</u> Acc No. <u>67882520</u> Sort Code <u>23-14-70</u>		
<b>4) Please describe the main activities of your organisation.</b>  <i>Further information/organisation literature may be attached.</i>	Water Rangers is a non-profit organization whose mission is to empower communities to understand and care for their local waterways. We design and develop easy to use water monitoring testkits for both marine and freshwater. We connect people to science through our organization's educational programming and tools so that communities have a voice in protecting their rivers, lakes, oceans, creeks and streams. We provide a free open data platform for communities to collect their water quality data (curated to be easy for the general public to use). Many waterways in the UK are data poor: we don't know the direct effects of human inputs. We believe that baseline water quality data over a large area that is collected by empowered volunteers is an integral component of sustainable water management and an important step to plan and monitor restoration efforts. To date we trained nearly 15,000 people, and our kits are used to monitor nearly 5,000 water bodies, in Canada, the UK and beyond.		
<b>5) How much are you applying for?</b>	£ <u>8,000</u>		
<b>6) Name of Project/Activity</b>	A Dynamic Connection: linking live outflow information to citizen science tools to activate community engagement		
<b>7) Give details of any previous applications by your organisation for grants from Godalming Town Council in the past 5 years.</b>	Year	Amount Applied For	Amount Granted

<p><b>8) Is your organisation either new or not known to the Council?</b></p> <p><i>If yes, please provide the name and contact details of at least one referee (e.g. an officer of an established organisation).</i></p>	<p><input checked="" type="checkbox"/> Yes (give referee details)      <input type="checkbox"/> No</p> <p>Kat met with Paul Follows, Clare Weightman, and Steve Williams to discuss this specific program and application.</p> <p>Kat met with Shirley Faraday and What Next to develop an application for a water testing hub in Godalming for regular monitoring efforts.</p> <p>Kat has arranged for Alex Adam to be a special guest speaker at the water monitoring event on January 28, 2023.</p>
<p><b>9) Brief Description of Project/Activity (up to 200 words)</b></p>	<p>This project connects two datasets: Thames Water overflows and citizen science monitoring data from Water Rangers open data platform. In collaboration with a growing list of community groups in the River Wey Catchment (e.g. River Wey Trust, Zero Guildford, Wey Landscape Partnership, What Next, Frensham Fly Fishers, etc), we will help the general public better understand the implications of pollution on water quality. The launch of this new feature will be presented at a Water Testing event held on March 18th, to correspond with World Water Day!</p> <ul style="list-style-type: none"> <li>• Connect the Thames Water API to the Water Rangers map so that the public can see them in the context of local monitoring efforts.</li> <li>• Display overflow data (last overflow time or 'in progress') alongside upstream and downstream water monitoring data, the year's total so far and any historical data available.</li> <li>• Display simple interpretation of parameters and results.</li> <li>• Create an email notification system for those monitoring upstream and downstream locations.</li> <li>• Design and build user experience flows that encourage new and regular sampling at unmonitored upstream and downstream locations across the catchment.</li> <li>• Build a 'widget' for community groups to be able to embed results on their own website.</li> </ul>
<p><b>10) How does the project aim to achieve a reduction in CO<sup>2</sup>?</b></p> <p><i>If applicable, explain how this meets one or more of the Council's funding priorities (see Guidance Notes for Applicants). Explain how the effectiveness of this will be measured.</i></p>	<p>Most don't think about waterways when it comes to climate change, yet studies estimate that rivers and streams release 3.9 billion tonnes of carbon annually (that's about 4 times as much as the global aviation industry!). It's worse than that: according to Long Tuan Ho, a postdoctoral researcher at Ghent University in Belgium, "when rivers become polluted, their global warming potential can increase from two to 10 times". Why? Because pollutants are converted into greenhouse gases by microorganisms in the rivers (Read more about rivers' influence on carbon emissions here: <a href="https://www.bbc.com/future/article/20210323-climate-change-the-rivers-that-breathe-greenhouse-gases">https://www.bbc.com/future/article/20210323-climate-change-the-rivers-that-breathe-greenhouse-gases</a>).</p> <p>Beyond the impact on carbon emissions, water's impact on climate events is amongst the worst: climate change is causing floods, droughts, and storms to intensify, reducing our ability to effectively plan for resilient infrastructure.</p> <p>It's a dismal picture and one that's not helped by the news that sewage overflows are happening regularly.</p> <p>The problems for our waterways are so large. The public is depressed: what can they do beyond complaining?</p> <p>This project activates the public and increases their agency to help determine 'hot spots' and the effects of sewage overflows.</p>
<p><b>11) Are you able to provide a quantitative estimate of CO<sup>2</sup> reduction as a result of your project?</b></p>	<p>While we cannot measure the direct effects of a cleaner river on CO<sub>2</sub> in the River Wey for this project, one of the follow-on projects planned is to engage with the University of Surrey for them to get masters students to help us quantify it.</p> <p>If we can do this, it will be revolutionary in the understanding of clean waterways on reducing greenhouse gases!</p>

<p><b>12) What benefits will this project give to Godalming in addition to CO<sup>2</sup> reduction?</b></p>	<p>Community groups are enthusiastically taking up water quality monitoring throughout the River Wey Catchment, and already sampling at 71 locations (in these two groups). Water quality monitoring is a component of a climate-resilient ecosystem: we need long-term and large datasets of baseline data to know what's happening now, whether our interventions have been successful, and how to plan for future interventions. It's one source of information amongst many to help us make evidence-informed decisions. Even more importantly, though, through citizen science, we activate the community to better understand the uniqueness and complexity of water systems and work with them to find solutions.</p> <p>One of the public's primary concerns is water quality related to sewage overflows. Thames Water has just opened up a near-realtime API that allows the public to view when sewage overflows are happening. This is a prime opportunity to create tools that help concerned citizens get involved in monitoring our catchment.</p>		
<p><b>13) How do you intend to spend the grant if successful?</b></p> <p><i>(e.g. equipment, materials, staff expenses, training, room hire etc.)</i></p>	<p><b>Purpose</b></p>	<p><b>Total spend</b></p>	<p><b>Spend from this grant</b></p>
	<p>Web development for the above features (additional funding was obtained for alignment of data structures from a "Data Champions" grant in Canada, which makes this project possible). Design and front-end development valued at £3,000 in-kind.</p>	<p>£8,000</p>	<p>£5,000</p>
	<p>World Water Day Event: 100 Mini "blitz" kits containing a thermometer, test strips and nutrients</p>	<p>£2,500</p>	<p>£2,500</p>
	<p>Marketing and publicity assets to celebrate World Water Day, and sharing the features of this project.</p>	<p>£500</p>	<p>£500</p>



<p><b>14) Give details of other applications for funding for this project.</b></p> <p><i>If you have not yet received a decision on other applications for funding, please give the date when the decision is expected</i></p>	<p>Source</p>	<p>Amount applied for</p>	<p>Amount awarded or expected date of decision</p>
<p><b>15) In what ways does your project involve volunteers?</b></p> <p><i>a) How many volunteers are involved? b) What will they do? c) What is the total number of hours of volunteer time that will be used?</i></p> <p><i>You can include fund-raising for the project as well as the project itself. If you are estimating figures this should be made clear</i></p>	<p>200</p> <hr/> <p>Our regular volunteers will monitor. Our event guests will participate in a one-day monitoring event. We'll also engage with school groups</p> <hr/> <p>450</p>		
<p><b>16) Have you received (or do you expect to receive) any donations in kind to support your project?</b></p> <p><i>If yes, give brief details and approximate value if possible (e.g. raffle prizes: £100; furniture: £200)</i></p>	<p><input checked="" type="checkbox"/> Yes <input type="checkbox"/> No</p> <p>All front-end and design work will be contributed in-kind by Kat.</p> <p>ZERO Guildford has already agreed to host the event for free and are holding the space for March 18th.</p>		
<p><b>17) Who will benefit from the project?</b></p>	<p>The local community will benefit from the opportunity to understand and participate in water stewardship. This is just a part of the work being done to link systems together that allow groups to participate in water stewardship.</p> <p>The broader country will also benefit from the example of the region. By inspiring other areas, by sharing the tools openly, we can help other groups, regions and countries find ways to solve their difficult water problems!</p>		

<p><b>18) How will you evaluate whether the project has been a success?</b></p> <p><i>You will be required to submit a report at the end of the project.</i></p>	<p># of monitoring locations in the catchment  # of monitoring locations near outflows  increase in monitoring locations near outflows  # of observations recorded in the catchment  # of observations recorded near outflows  increase in observations near outflows  # of regular monitoring volunteers in the region  increase in regular monitoring volunteers in the region  # social media posts about the project  # of planned restoration or improvement efforts near sample locations</p> <p># people attending the water testing event  # people attending the event who take a water sample  # people attending the event who become regular water testing volunteers</p> <p>social media reach</p> <p>You will be presented with an impact report for this project, which will include relevant statistics, quotes from participants, and action photos. You can see some examples of our historical impact reports here: <a href="https://waterrangers.ca/about/impact-reports/">https://waterrangers.ca/about/impact-reports/</a></p>
<p><b>19) When do you expect your project to start and finish?</b></p> <p><i>If the project is open-ended or continues beyond the time funded by this grant, explain how you expect it to be funded in future.</i></p>	<p>This project will begin immediately in order to be successfully completed on March 18th, 2023.</p> <p>In order to find out the positive effects of this project, the impact report will be created for November, 2023.</p>
<p><b>20) Will you be working with any other organisations to deliver this project?</b></p> <p><i>If so, please explain briefly how this will work.</i></p> <p><i>In particular include any evidence that working in partnership on this project will contribute more widely to strengthening community networks.</i></p>	<p><input checked="" type="checkbox"/> Yes <input type="checkbox"/> No</p> <p>We are very much focused on working collaboratively!</p> <p>For this project, we are reliant on Thames Water's new API, the availability of our web developer, the availability of ZERO Guildford on March 18th, and the help of groups like the River Wey Trust to ensure we have reached our goals!</p> <p>The community groups at large will all provide feedback on the new system for us to improve!</p>
<p><b>21) How is your organisation constituted?</b></p> <p><i>You must attach a copy of your constitution or memorandum and articles of association (if a company) or rules or other evidence of how members join and how decisions are made.</i></p>	<p><input type="checkbox"/> Charity <input type="checkbox"/> Registered or  <input type="checkbox"/> Unregistered</p> <p><input type="checkbox"/> Company <input type="checkbox"/> Limited by shares or  <input type="checkbox"/> Limited by guarantee</p> <p><input type="checkbox"/> Charitable trust</p> <p><input type="checkbox"/> Constituted voluntary organisation</p> <p><input checked="" type="checkbox"/> Other (give details)  Canadian Registered Non-profit Organization</p>

<p><b>22) Does your organisation have a health and safety policy and a risk assessment for the proposed activity or event?</b></p> <p><i>We may ask you for a copy.</i></p>	<p><input checked="" type="checkbox"/> Yes <input type="checkbox"/> No</p> <p>For British events, we rely on our partners, River Wey Trust and ZERO Guildford for the appropriate health and safety protocols.</p>
<p><b>23) Does your organisation have an equal opportunities policy?</b></p> <p><i>We may ask you for a copy.</i></p>	<p><input checked="" type="checkbox"/> Yes <input type="checkbox"/> No</p>
<p><b>24) Does your organisation undertake not to discriminate on grounds of gender, sexuality, race, colour, creed and disability?</b></p> <p><i>If no, please explain.</i></p>	<p><input checked="" type="checkbox"/> Yes <input type="checkbox"/> No (give details)</p>
<p><b>25) Does your organisation have appropriate insurance in place for this project/activity?</b></p> <p><i>If yes, give the name of the company, dates, type of cover and amount insured.</i></p>	<p><input checked="" type="checkbox"/> Yes (give details) <input type="checkbox"/> No</p> <p>We hold General Liability Insurance (\$5 million), Errors &amp; Omissions Insurance (\$500,000), and Directors and Officers Liability Insurance through Trigon Insurance</p>
<p><b>26) Does your project involve children, young people or vulnerable adults?</b></p> <p><i>If yes,</i></p> <p><i>a) do you have a safeguarding children and vulnerable adults policy? If yes, we may ask you for a copy.</i></p> <p><i>b) Are all relevant staff and volunteers DBS checked?</i></p>	<p><input checked="" type="checkbox"/> Yes <input type="checkbox"/> No</p> <p><input type="checkbox"/> Yes <input checked="" type="checkbox"/> No</p> <p>When we involve children, we do so in collaboration with the River Wey Trust, who hold these relevant documents and certifications</p> <p><input type="checkbox"/> Yes <input checked="" type="checkbox"/> No</p> <p>Because we are a Canadian org, all events we do are in collaboration with a British org who take care of these items.</p>

You must attach	Attached
Your organisation's constitution and/or rules	<input checked="" type="checkbox"/>
Your organisation's latest set of accounts (if available)	<input type="checkbox"/>
Have you attached	
Further information about your organisation/project? (optional)	<input checked="" type="checkbox"/>

Please visit [waterrangers.ca](http://waterrangers.ca) for more information about our organization!  
Please visit our two data collecting groups:  
<https://app.waterrangers.ca/groups/zero-guildford-river-wey-at-guildford>  
<https://app.waterrangers.ca/groups/river-wey-trust-water-quality-testing>

<b>Declaration and data protection statement</b> <i>The declaration must be signed by two authorised representatives of the organisation applying</i>		<b>Agreed</b>
We confirm that the organisation named in this form has authorised us to sign this application on their behalf.		<input checked="" type="checkbox"/>
The information in this application is correct to the best of our knowledge.		<input checked="" type="checkbox"/>
Any grant aid received will be used solely for the purposes specified herein or returned to Godalming Town Council.		<input checked="" type="checkbox"/>
Any grant that remains unspent at the end of the project will be returned to Godalming Town Council		<input checked="" type="checkbox"/>
Any proceeds from the project will be reinvested in the project or returned to Godalming Town Council		<input checked="" type="checkbox"/>
We agree to our names and details of our organisation being held in paper and electronic files.		<input checked="" type="checkbox"/>
<b>Signature</b>		
<b>Name</b>	Kat Kavanagh	
<b>Position in Organisation</b>	Executive Director	
<b>Date</b>	25 January, 2023	
<b>Signature</b>		
<b>Name</b>	Katie Miller	
<b>Position in Organisation</b>	Treasurer, Board of Directors	
<b>Date</b>	25 January, 2023	

## GODALMING TOWN COUNCIL

Disclosure by a Member<sup>1</sup> of a disclosable pecuniary interest or other registerable interest (non-pecuniary interest) in a matter under consideration at a meeting (S.31 (4) Localism Act 2011 and the adopted Godalming Members' Code of Conduct).

As required by the Localism Act 2011 and the adopted Godalming Members' Code of Conduct, **I HEREBY DISCLOSE**, for the information of the authority that I have [a disclosable pecuniary interest]<sup>2</sup> [a registerable interest (non-pecuniary interest)]<sup>3</sup> in the following matter:-

**COMMITTEE:** \_\_\_\_\_

**DATE:** \_\_\_\_\_

**NAME OF COUNCILLOR:** \_\_\_\_\_

Please use the form below to state in which agenda items you have an interest.

Agenda No.	Subject	Disclosable Pecuniary Interests	Other Registerable Interests (Non-Pecuniary Interests)	Reason

**Signed** \_\_\_\_\_

**Dated** \_\_\_\_\_

<sup>1</sup> "Member" includes co-opted member, member of a committee, joint committee or sub-committee

<sup>2</sup> A disclosable pecuniary interest is defined by the Relevant Authorities (Disclosable Pecuniary Interests) regulations 2012/1464 and relate to employment, office, trade, profession or vocation, sponsorship, contracts, beneficial interests in land, licences to occupy land, corporate tenancies and securities

<sup>3</sup> A registerable interest (non-pecuniary interest) is defined by Section 9 of the Godalming Members' Code of Conduct.